

Benefits

Easy\_Centric

Quality.

Portfolio

Easy.  
Right on point.

VITA



VITA MFT®

Amazing efficiency and compelling quality:  
The VITA denture tooth with Easy Centric.







Advantages






Denture tooth

# VITA MFT<sup>®</sup>

Saves time. Saves money. Reduces stress.

## The advantages

-  **Saves time**  
Simple and efficient setup, thanks to VITA Easy Centric principle. Suitable for all common setup techniques.
-  **Saves money**  
Multifunctional, economic denture tooth in a large range of shades and shapes. Available in 16 VITA SYSTEM 3D-MASTER shades and 16 VITA classical A1-D4 shades.
-  **Reduces stress**  
Reliable and rapid results with compelling quality for you and your patients.





**Easy  
Centric**

## Simply to the point, thanks to predefined contact points.

The VITA MFT (Multi Functional Tooth) can be used in a variety of ways – for partial and total dentures, as well as hybrid and implant prosthetics.

Since the chewing surface is designed to be multifunctional, the tooth line is suitable for all common setup concepts.

Thanks to VITA Easy Centric, the VITA MFT sets up almost automatically, saving time and reducing stress.



## Simple setup. Very good esthetics.

*Floldi Endrio, dental technician, Italy:*  
"For a tooth at this price level, it not only impresses with its quality and esthetics, but especially with its simple handling."

[To the case reports](#)



## Cost-effectiveness and esthetics

*Susana García, dental technician, Spain:*

"The simple setup makes this tooth unique in this segment. Cost-effectiveness and esthetics – VITA MFT offers both."

**Easy  
Centric**

Easy. To the point.

The VITA Easy Centric principle for rapid workflow

**The VITA MFT denture tooth with Easy Centric principle offers an efficient setup, according to all common techniques.**

- **Simple setup with high stability**

through predefined contact points and automatic centric finding

- **Reduced grinding effort**

through optimized basal design

- **Can be used reliably with all prosthetic techniques**

due to its multifunctional chewing surface design. Can be used, for example, with the methods of Prof. Dr. A. Gerber, APF/TiF, Gysi und ABC.

CLICK







Easy. To the point.

Visit VITA MFT Website

CLICK



Positioning the teeth



Final full denture according to all common setup techniques



Nearly automatic centering, due to the Easy Centric principle







Easy. To the point.



Visit VITA MFT Website

CLICK



VITA MFT® – Setup



Shade  
& Shape

Simply beautiful. Simply versatile.

### Reliable shade reproduction

Certainty when choosing the tooth shade, due to the PERFECT MATCH with the original VITA shade guides.

- 16 x VITA classical A1-D4 and
- 16 x VITA SYSTEM 3D-MASTER shades, including three bleached shades



natural play of light



The VITA MFT has proven to be a high-quality and economical tooth that absolutely satisfies not only my dental team, but also our patients."

**Boris Jovanović**  
dental technician, Belgrade, Serbia





**Shade  
& Shape**

Simply beautiful. Simply versatile.

### Numerous shapes

12 x upper jaw anterior tooth shapes  
5 x lower jaw anterior tooth shapes  
3 x upper jaw posterior tooth shapes  
3 x lower jaw posterior tooth shapes

natural moulding



excellent incisal design



The tooth's shape chart, color transition, and anatomy are all exceptional, making it a great choice for dental professionals. Additionally, its durability ensures long-lasting results, further adding to its value for money. I truly recommend this tooth to all my colleagues based on these reasons.

Beltrán Rodríguez, Dental Technician, **Spain**





**Shade  
& Shape**

**'VITA MFT was initially recommended by a colleague from another lab. It is pretty easy to set up and the shape and texture truly convinced me!'**

César Pere, Dental Technician, **Portugal**





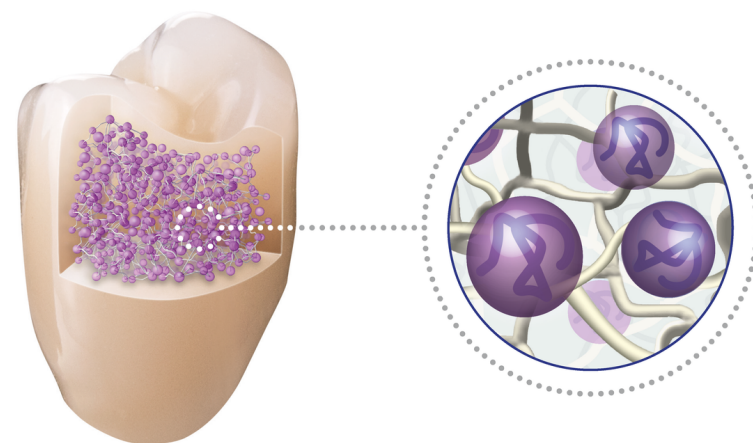
Quality

## Compelling quality

Reliable material quality for tested durability.  
Developed by German engineers.

### Proven material

The proven VITA HC polymer material (highly cross-linked polymer) has a matrix of highly cross-linked MMA and cross-linked monomers. The result is good mechanical stability and surface resistance.





**Quality**

Compelling quality

### According to German quality standards

Developed by German engineers in cooperation with experienced dental technicians worldwide.

Tested manufacturing processes (according to German quality standards in production and design) for consistently high quality (EN ISO 13485 tested and certified).



**'I immediately noticed that VITA MFT is easy to set up, durable and looks really good. VITA MFT teeth provide a decent chewing surface in the posteriors, which is very important.'**

Endrio Floridi, Dental Technician, **Italy**

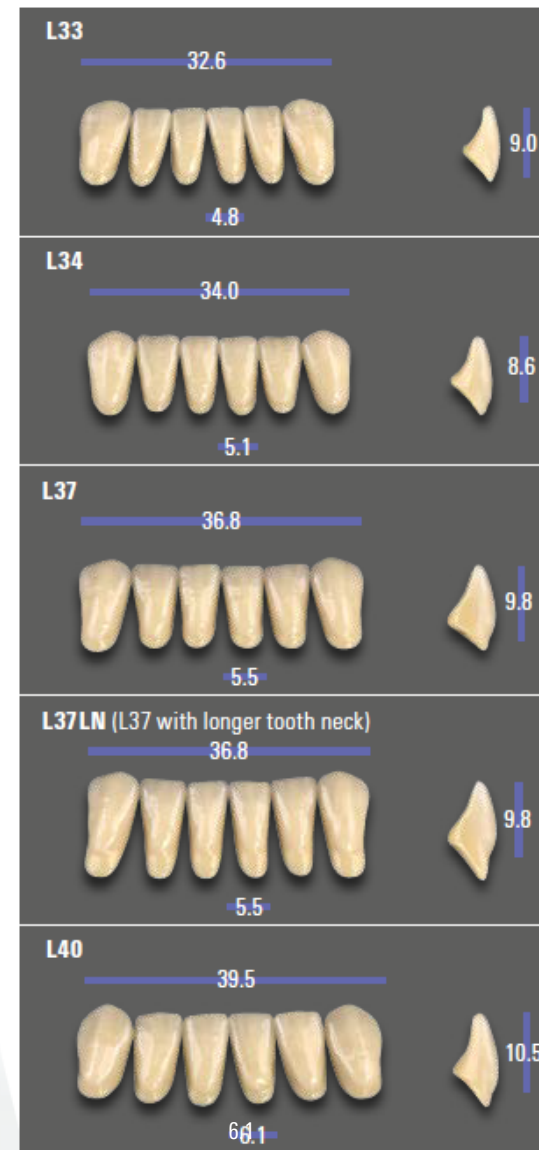


# Shapes

A variety of shapes.



## Anterior teeth of the lower jaw

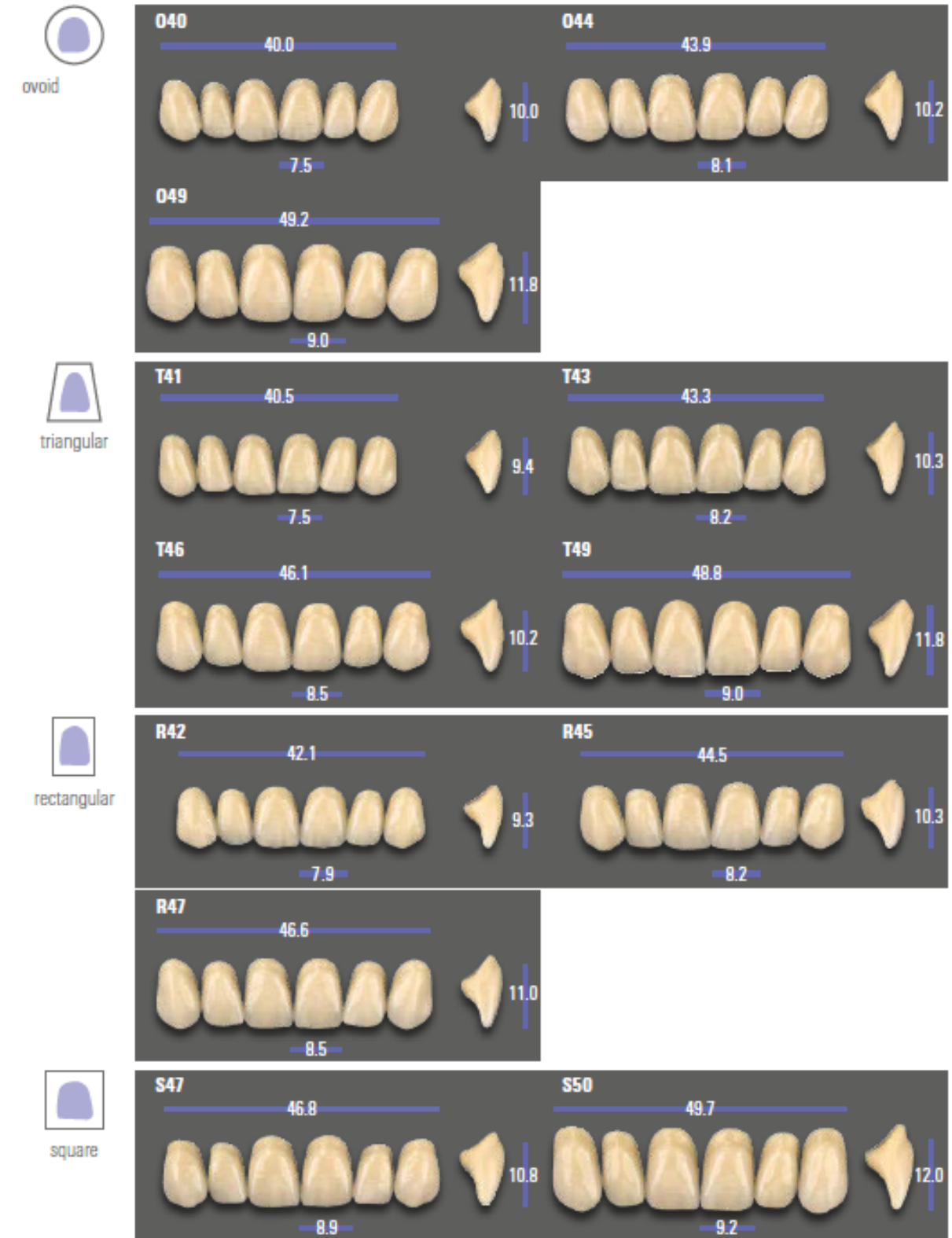


### 16 x VITA SYSTEM 3D-MASTER®

(0M1, 0M2, 0M3, 1M1, 2L1.5, 2M1, 2M2, 3M1, 3L1.5, 3L2.5, 3M2, 3R2.5, 3M3, 4L1.5, 4M2, 5M1)

### 16 x VITA classical A1-D4®

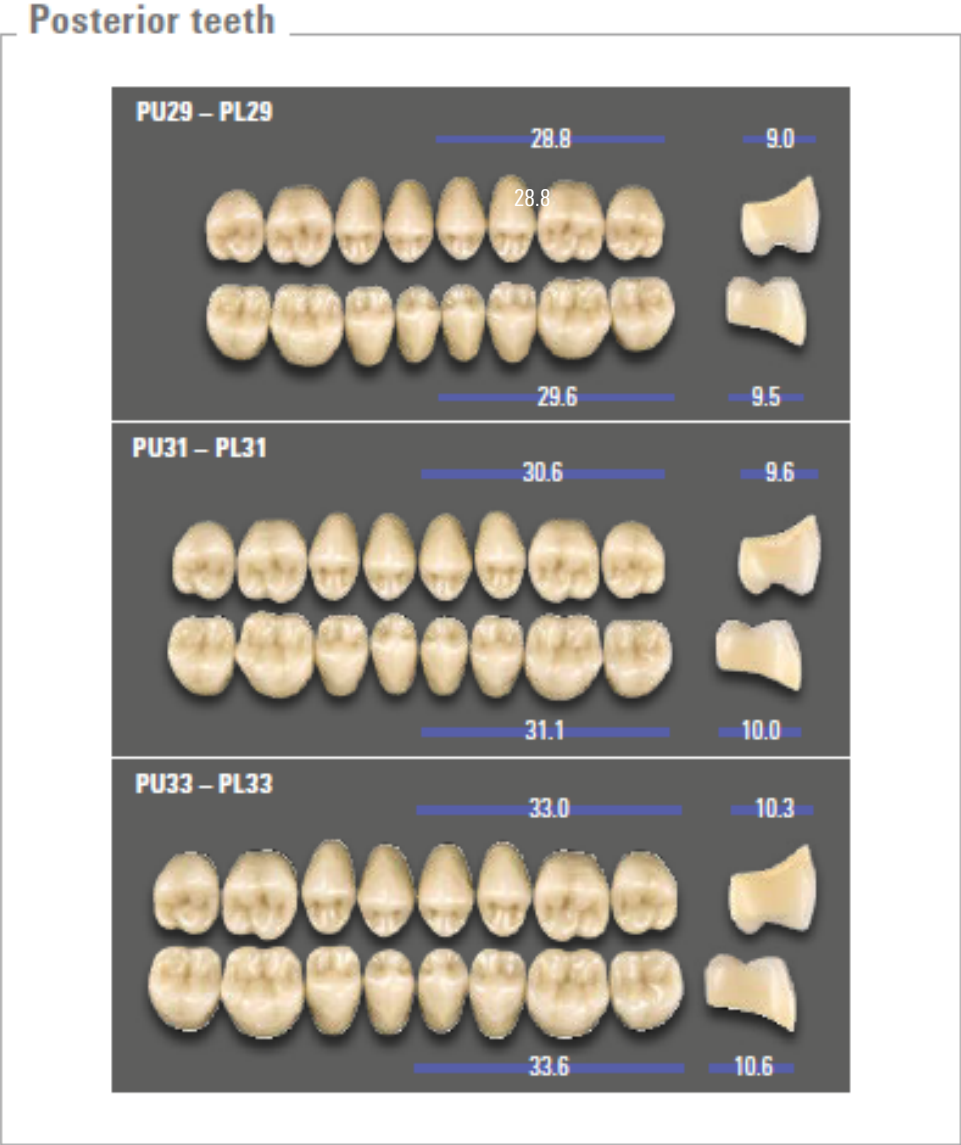
## Anterior teeth of the upper jaw





# Shapes

A variety of shapes.



**Recommended combinations**

<b>VITA MFT</b> Anterior teeth	<b>UJ / No.</b> mm	040 40.0	044 43.9	049 49.2	T41 40.5	T43 43.3	T46 46.1	T49 48.8	R42 42.1	R45 44.5	R47 46.6	S47 46.8	S50 49.7
	<b>LJ / No.</b> mm	L33 32.6	L34 34.0	L40 39.5	L33 32.6	L34 34.0	L37 36.8	L40 39.5	L34 34.0	L37 36.8	L37 36.8	L40 39.5	L40 39.5
<b>VITA MFT</b> Posterior teeth	<b>UJ / No.</b> mm	PU29 28.8	PU29 28.8	PU33 33.0	PU29 28.8	PU31 30.6	PU31 30.6	PU33 33.0	PU29 28.8	PU31 30.6	PU33 33.0	PU33 33.0	PU33 33.0
	<b>LJ / No.</b> mm	PL29 29.6	PL29 29.6	PL33 33.6	PL29 29.6	PL31 31.1	PL31 31.1	PL33 33.6	PL29 29.6	PL31 31.1	PL33 33.6	PL33 33.6	PL33 33.6

Please consider this table only as a recommendation. The appropriate combination depends greatly on the individual patient situation.



# Suitable solutions for processes.



## Shade determination

Shade determination with the VITA Easyshade V, VITA Easyshade LITE or the VITA shade guides.



## Shape determination

Select the appropriate tooth shape from your tooth storage. The shape can also be determined with the living mould chart.



## Your VITA MFT denture tooth

Easy. To the point.  
Now available in 16 x VITA SYSTEM 3D-MASTER and 16 x VITA classical A1-D4 shades.



## Bonding

Use VITACOLL as a reliable adhesive agent between the VITA MFT denture teeth and the denture base. VITAFOL is the recommended silicone insulation material.



## Characterization

Characterize your denture with the lightcuring microparticle composite VITA VM LC. The light-curing stains VITA AKZENT LC are also available for characterization.



# We are happy to help.

## Hotline Sales Support

Phone +49 7761 562-884  
Fax +49 7761 562-299  
8 a.m. to 5 p.m. CET  
info@vita-zahnfabrik.com

## Technical Hotline


Phone +49 7761 562-222  
Fax +49 7761 562-446  
8 a.m. to 5 p.m. CET  
info@vita-zahnfabrik.com



## Please note:

Unsere Produkte sind gemäß Gebrauchsinformationen zu verwenden. Wir übernehmen keine Haftung für Schäden, die sich aus unsachgemäßer Handhabung oder Verarbeitung ergeben. Der Verwender ist im Übrigen verpflichtet, das Produkt vor dessen Gebrauch auf seine Eignung für den vorgesehenen Einsatzbereich zu prüfen. Eine Haftung unsererseits ist ausgeschlossen, wenn das Produkt in nicht verträglichem bzw. nicht zulässigem Verbund mit Materialien und Geräten anderer Hersteller verarbeitet wird und hieraus ein Schaden entsteht. Die VITA Modulbox ist nicht zwingender Bestandteil des Produktes. Herausgabe dieser Produktbroschüre: 01.24

Mit der Herausgabe dieser Gebrauchsinformation verlieren alle bisherigen Ausgaben ihre Gültigkeit. Die jeweils aktuelle Version finden Sie unter [www.vita-zahnfabrik.com](http://www.vita-zahnfabrik.com)

VITA Zahnfabrik ist zertifiziert und folgende Produkte tragen die Kennzeichnung: VITA MFT® 

In diesem Dokument genannte Produkte/Systeme anderer Hersteller sind eingetragene Marken der jeweiligen Hersteller.



## References

### Internal studies, VITA R&D:

VITA Zahnfabrik H. Rauter GmbH & Co. KG  
Research and Development Division  
Spitalgasse 3, 79713 Bad Säckingen, Germany  
Dr. Berit Gödiker, project manager for VITA R&D,  
VITA Zahnfabrik, Bad Säckingen

### Detailed test data

See technical and scientific documentation

## VITA MFT®

Download via [www.vita-zahnfabrik.com](http://www.vita-zahnfabrik.com)



# VITA MFT<sup>®</sup>

EASY. RIGHT ON **POINT.**



CLICK



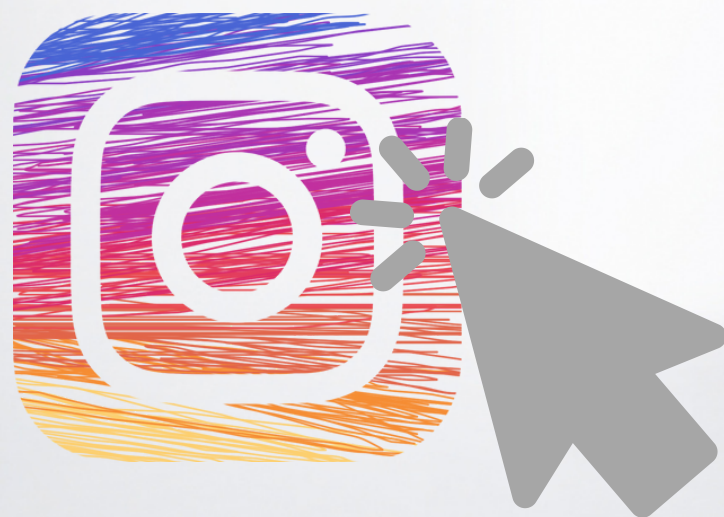


# VITA MFT®

EASY. RIGHT ON POINT.

VITA

Follow us on  
Social Media!



VITA Zahnfabrik H. Rauter GmbH & Co. KG

Spitalgasse 3  
79713 Bad Säckingen Germany

Phone: +49 7761 562-0  
Hotline: +49 7761 562-222

info@vita-zahnfabrik.com  
www.vita-zahnfabrik.com